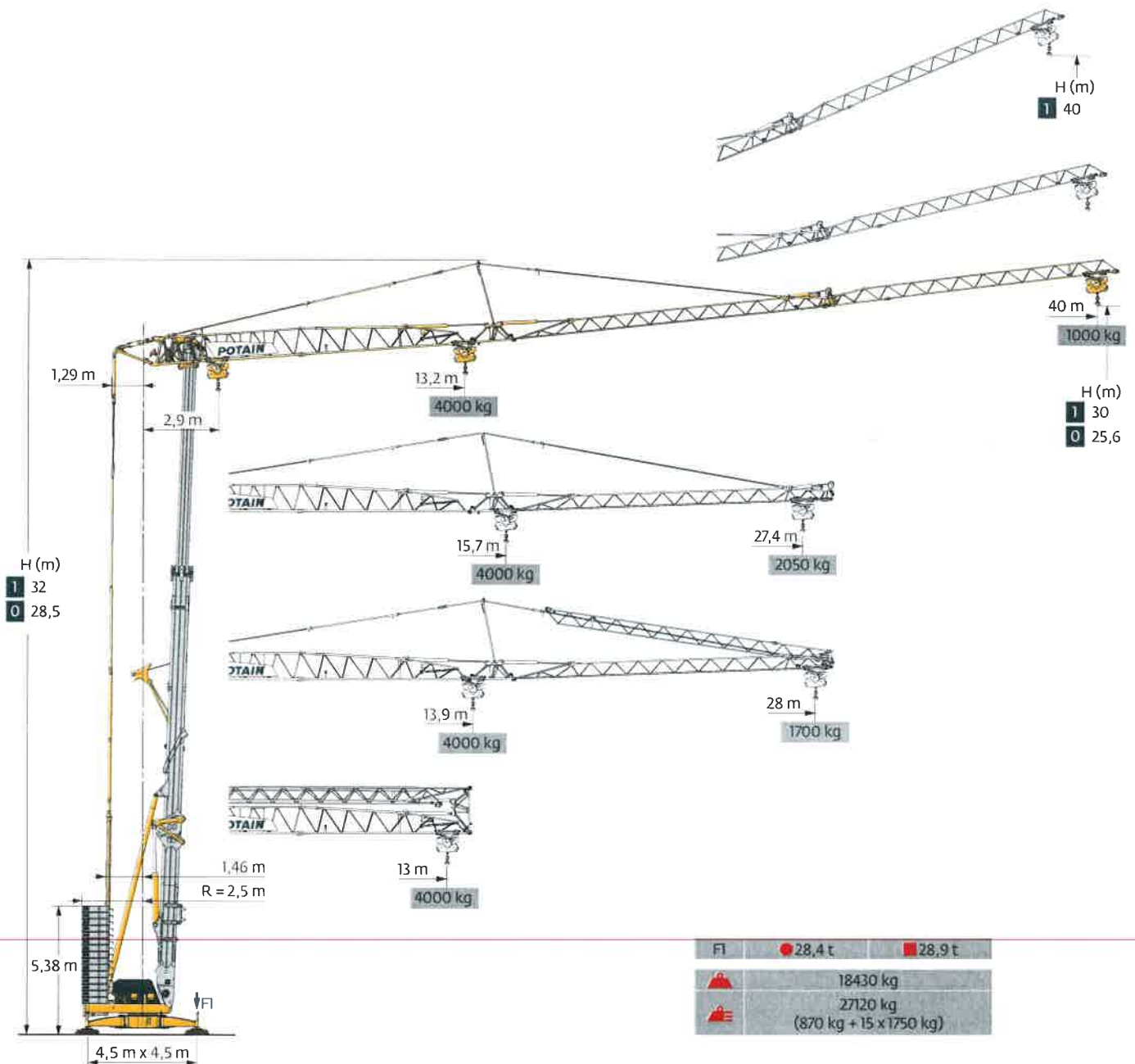
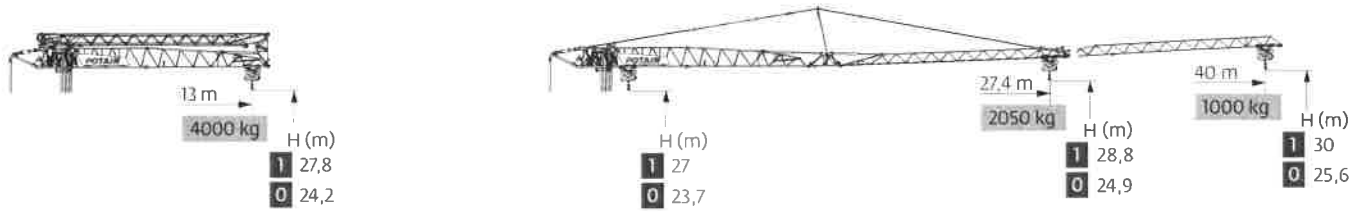


Hup 40-30

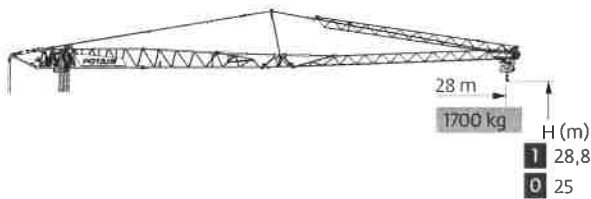


Smart Set-up Drive Control Power Control CraneSTAR Diag Top Site Top Tracing 3

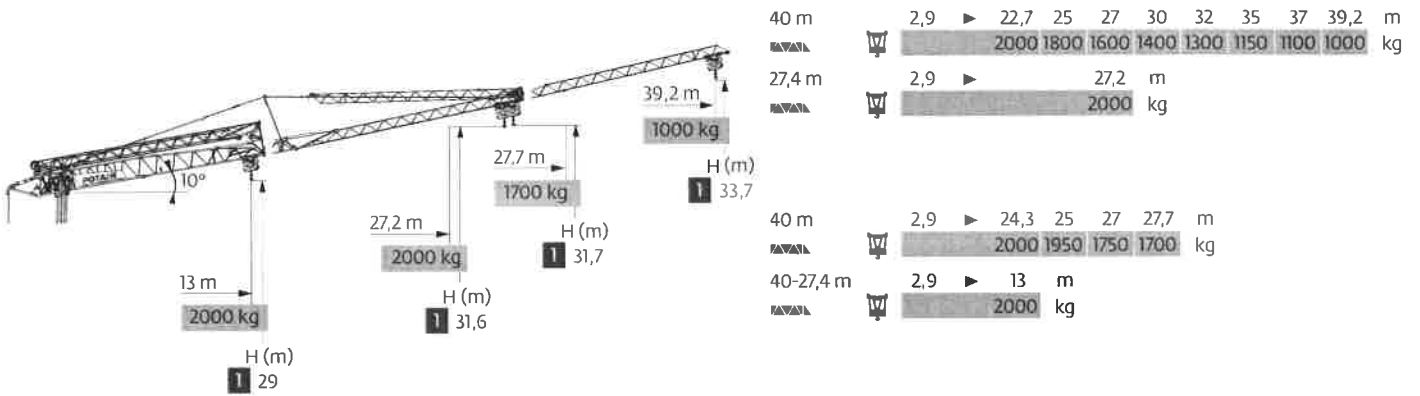
Courbes de charges / Lastkurven / Load curves / Curvas de cargas / Curve di carico
 Curvas de carga / Кривые нагрузок



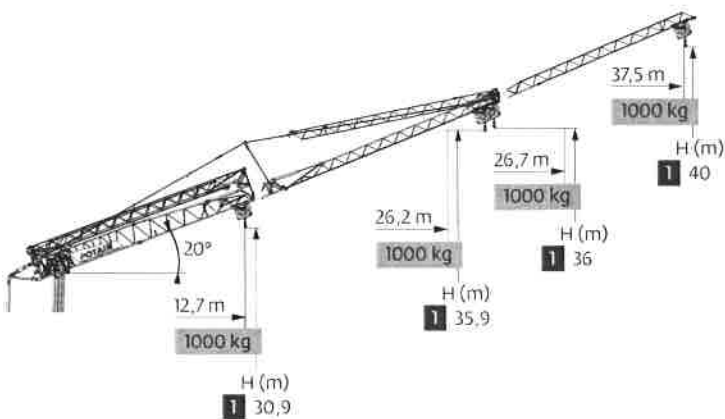
| | | | | | | | | | | | | | | | | | | | | | | | | | |
|--------|-----|---|------|----|--|------|---|------|------|------|------|------|------|------|------|------|------|------|------|------|------|------|----|----|----|
| 40 m | 2,9 | ▶ | 13 | m | | 2,9 | ▶ | 13,2 | 14 | 15 | 16 | 17 | 18 | 19 | 20 | 22 | 25 | 27 | 30 | 32 | 35 | 37 | 40 | m | |
| ▲▲▲▲ | ☒ | | 4000 | kg | | 4000 | | 3700 | 3400 | 3150 | 2950 | 2750 | 2550 | 2400 | 2150 | 1800 | 1650 | 1450 | 1350 | 1200 | 1100 | 1000 | | kg | |
| 27,4 m | 2,9 | ▶ | 13 | m | | 2,9 | ▶ | | 15,7 | 16 | 17 | 18 | 19 | 20 | 22 | 25 | 27,4 | m | | | | | | | |
| ▲▲▲▲ | ☒ | | 4000 | kg | | 4000 | | 3900 | 3650 | 3400 | 3200 | 3000 | 2650 | 2300 | 2050 | | | | | | | | | | kg |



| | | | | | | | | | | | | | | | |
|------|-----|---|------|------|------|------|------|------|------|------|------|------|------|------|----|
| 40 m | 2,9 | ▶ | 13,9 | 14 | 15 | 16 | 17 | 18 | 19 | 20 | 22 | 25 | 27 | 28 | m |
| ▲▲▲▲ | ☒ | | 4000 | 3950 | 3650 | 3350 | 3150 | 2900 | 2750 | 2550 | 2300 | 1950 | 1800 | 1700 | kg |



| | | | | | | | | | | | |
|-----------|-----|---|------|------|------|------|------|------|------|------|----|
| 40 m | 2,9 | ▶ | 22,7 | 25 | 27 | 30 | 32 | 35 | 37 | 39,2 | m |
| ▲▲▲▲ | ☒ | | 2000 | 1800 | 1600 | 1400 | 1300 | 1150 | 1100 | 1000 | kg |
| 27,4 m | 2,9 | ▶ | | | 27,2 | m | | | | | |
| ▲▲▲▲ | ☒ | | | | 2000 | kg | | | | | |
| 40 m | 2,9 | ▶ | 24,3 | 25 | 27 | 27,7 | m | | | | |
| ▲▲▲▲ | ☒ | | 2000 | 1950 | 1750 | 1700 | kg | | | | |
| 40-27,4 m | 2,9 | ▶ | 13 | m | | | | | | | |
| ▲▲▲▲ | ☒ | | 2000 | kg | | | | | | | |

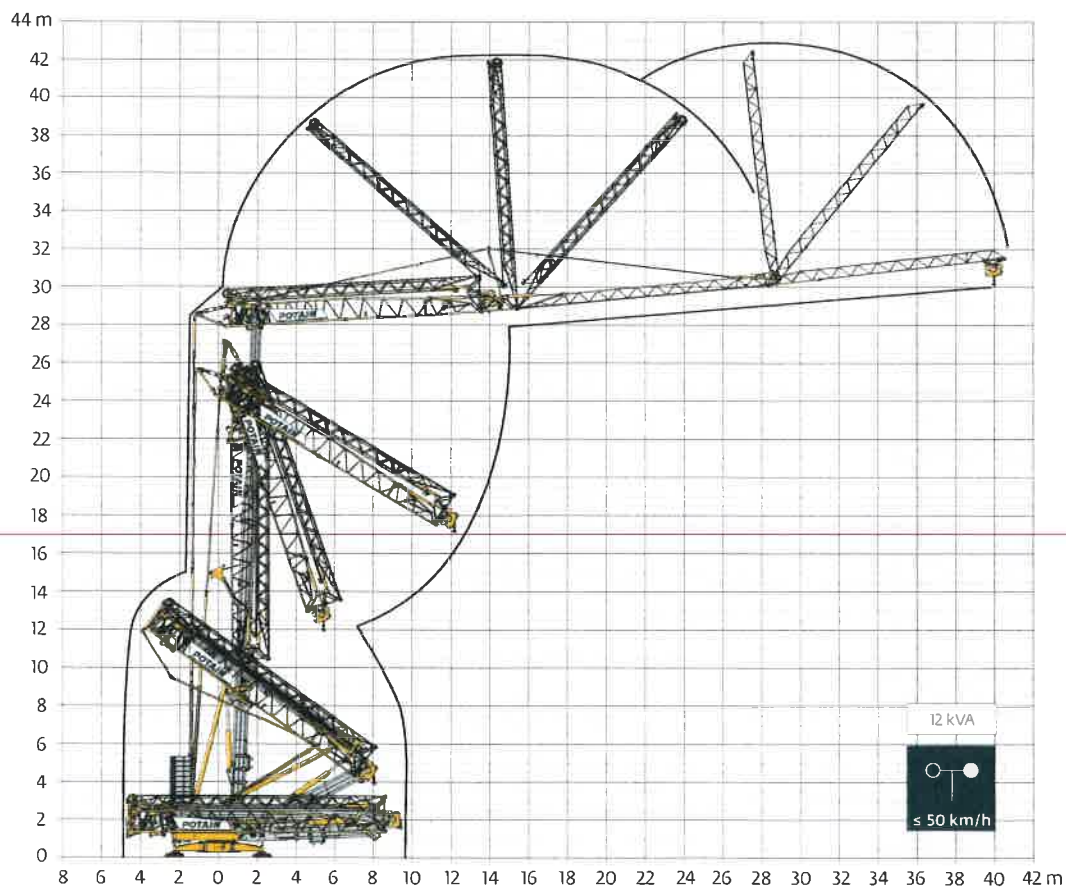


Mécanismes / Triebwerke / Mechanisms / Mecanismos / Meccanismi
 Механизмы / Механизмы

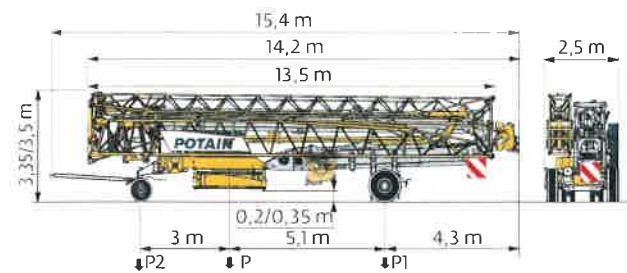
| 400 V - 50 Hz 480 V - 60 Hz | | UU | | | | | ch - PS hp | kW |
|--------------------------------|------------------------|---|------|------|------|-----|---------------|---------|
| 18 HPL™ 10 | m/min | 1,7 | 19 | 36 | 58 | 65 | 18 | 13 |
| | kg | 4000 | 4000 | 2000 | 1000 | 500 | | |
| 3 DVF 5 | m/min | 1 → 45 (0 → 1000 kg) 1 → 41 (1000 → 4000 kg) | | | | | 3 | 2,2 |
| HPS 142 | tr/min U/min rpm | 0 → 0,9 | | | | | 2 x 5 | 2 x 3,7 |

| IEC 60204-32 | kVA | |
|---|-------------|---|
| 400 V (+10% -10%) 50 Hz 480 V (+6% -10%) 60 Hz | 23 → 17 kVA |  |

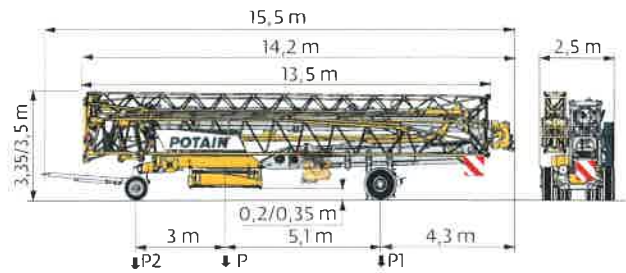
Montage / Montage / Erection / Montaje / Montaggio
 Монтаж / Монтаж



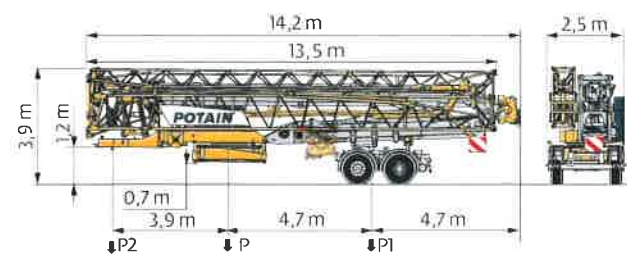
Transport / Transport / Transport / Transporte / Trasporto
Transporte / Транспортировка



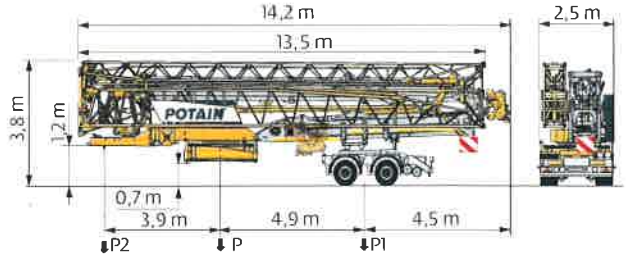
| | km/h | P (kg) | P1 (kg) | P2 (kg) |
|------------|------|--------|---------|---------|
| DJ100/S120 | 10 | 20320 | 11870 | 8450 |
| DJ105/S125 | 25 | 20580 | 11980 | 8600 |



| | km/h | P (kg) | P1 (kg) | P2 (kg) |
|--------------|------|--------|---------|---------|
| DJ126M/S125 | 25 | 20780 | 12000 | 8780 |
| /..... | | | | |



| | km/h | P (kg) | P1 (kg) | P2 (kg) |
|-------------|------|--------|---------|---------|
| SL121/S215M | 25 | 21880 | 14710 | 7170 |



| | km/h | P (kg) | P1 (kg) | P2 (kg) |
|-------------------|------|--------|---------|---------|
| SL122/J215M (EBS) | 80 | 21680 | 14510 | 7170 |

► J215M: RCE e2°2007/46°0493°01
WVTA e2°2007/46°0493°01

| | FR | DE | EN | ES | IT | PT | RU |
|--|---|--|--|--|--|---|---|
| | Rayon de giration | Schwenk radius | Rear slewing radius | Radio de giro | Raggio di rotazione | Raio de rotação | Задний габарит |
| | Nous consulter | Auf Anfrage | Consult us | Consultarnos | Consultateci | Consultar-nos | Проконсультируйтесь у нас |
| | Réactions en service | Reaktionskräfte in Betrieb | Reactions in service | Reacciones en servicio | Reazioni in servizio | Reacções em serviço | Реакция при работе |
| | Réactions hors service | Reaktionskräfte außer Betrieb | Reactions out of service | Reacciones fuera de servicio | Reazioni fuori servizio | Reacções fora de serviço | Реакция в покое |
| | Poids à vide, sans lest, sans trains de transport avec flèche maxi et hauteur standard | Gewicht ohne Last ohne Ballast ohne Transportachsen mit max Auslager- und Standardhöhe | Weight without load, without ballast, without transport axles, with max jib and standard height | Peso en vacío, sin lastre, sin trenes de transporte con flecha y altura estándar | Peso a vuoto, senza lastri, senza assi di trasporto, con braccio max e altezza standard | Peso em vazio, sem lastro, sem eixos de transporte com lança máxima e altura standard | Вес без груза, без балласта, без осей для транспортировки, с максимальным вылетом стрелы и стандартной высотой |
| | Poids total du lest | Ballast-Gesamtwegicht | Total ballast weight | Peso total del lastre | Peso totale della zavorra | Peso total do lastro | Общий вес балласта |
| | Equipements standards | Standardausrüstungen | Standard equipment | Equipamiento de serie | Equipaggiamento standard | Equipamento de série | Стандартное оборудование |
| | Equipements optionnels | Sonderausrüstungen | Options | Equipamiento opcional | Equipaggiamento in opzione | Equipamento opcional | Дополнительное оборудование (опция) |
| | Levage | Heben | Hoisting | Elevación | Sollevamento | Elevação | Подъем |
| | Distribution | Katzfahren | Trolleying | Distribución | Distribuzione | Distribuição | Перемещение по стреле |
| | Orientation | Schwenken | Slewing | Orientación | Rotazione | Rotação | Поворот |
| | Puissance requise | Erforderliche Leistung | Required power | Potencia Necesaria | Potenza richiesta | Potência Necessária | Потребляемая мощность |
| | Fonction Power Control vitesses treuils adaptées à la puissance disponible | Funktion Power Control Geschwindigkeiten der Triebwerke werden an die verfügbare Leistung angepasst | Power Control Function winch speeds adapted to the available power | Función Power Control marchas de los cabrestantes adaptadas a la potencia disponible | Funzione Power Control: velocità degli argani adattate alla potenza disponibile | Função Power Control velocidades de guincho adaptadas à potência disponível | Функция контроля мощности Power Control: регулировка скорости лебедок в зависимости от доступной мощности |
| | Document commercial non contractuel. Pour toute information technique se référer à la notice correspondante | Unverbindliches Vertriebsdokument. Für technische Informationen siehe die entsprechenden Anweisungen | This commercial document is not legally binding. For any technical information, please refer to the corresponding instructions | Documento comercial no contractual. Para cualquier información técnica, ver la noticia correspondiente | Documento commerciale non vincolante. Per tutte le informazioni tecniche (fare riferimento al catalogo istruzioni) | Documento comercial não contratual. Para qualquer informação técnica complementar consultar as respectivas instruções | Этот коммерческий документ не является юридически обязательным. Для получения технической информации, см соответствующие инструкции |

