

45m - 3.500kg

40m - 4.000kg

38m - 4.200kg

33m - 4.700kg

28m - 5.200kg

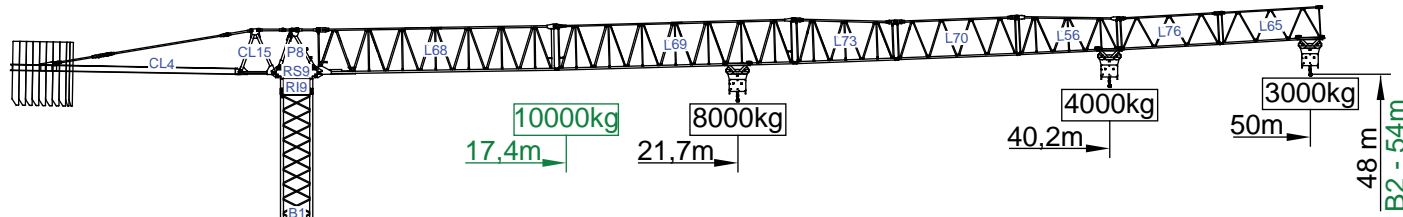
I

II

III

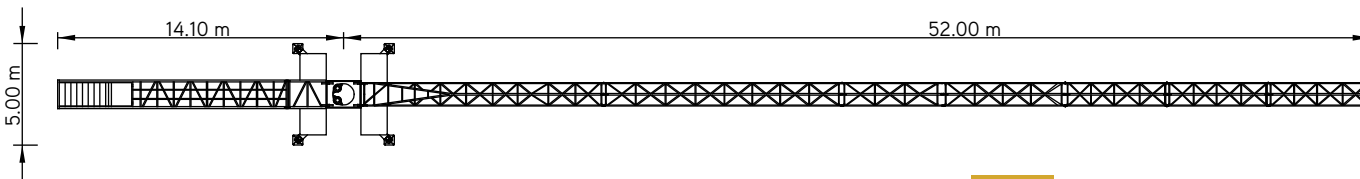
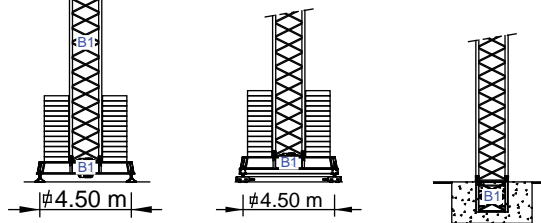
IV

V



Cargas.Loads.Lasten.Charges.Cargas.Carichi.Yükler. ГРУЗОПОДЪЁМНОСТЬ

Icon	Span (m)	Jib Configuration	Kg/m M/КТ	m	Capacity (kg)							
					18	23	28	33	38	40	45	50
Icon 1	50m	L68+L69+L73+L70+L56 L76+L65	8000	40,2 m	4000	4000	4000	4000	4000	3920	3410	3000
				21,7 m	8000	7340	5900	4900	4170	3920	3410	3000
Icon 2	45m	L68+L69+L73+L70+L56 L76	8000	41,1 m	4000	4000	4000	4000	4000	4000	3500	
				22,2 m	8000	7510	6050	5030	4270	4020	3500	
Icon 3	40m	L68+L69+L73+L70+L56	8000	40 m	4000	4000	4000	4000	4000	4000	4000	
				22,2 m	8000	7470	6010	4990	4250	4000		
Icon 4	38m	L68+L73+L70+L56+L76 L65	8000	38 m	4000	4000	4000	4000	4000	4000		
				22,1 m	8000	7450	5990	4980	4200			
Icon 5	33m	L68+L73+L70+L56+L76	8000	33 m	4000	4000	4000	4000				
				21,3 m	8000	7100	5710	4700				
Icon 6	28m	L68+L73+L70+L56	8000	28 m	4000	4000	4000					
				19,9 m	8000	6540	5200					








SGT5030TL









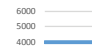
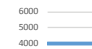
SGT 5030TL

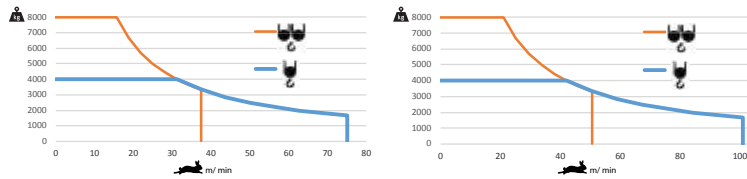
50m - 3.000kg

8.000Kg

Características . Characteristics . Eigenschaften
Caractéristiques . Characteristics . Caratteristiche
Özellikler . ХАРАКТЕРИСТИКИ

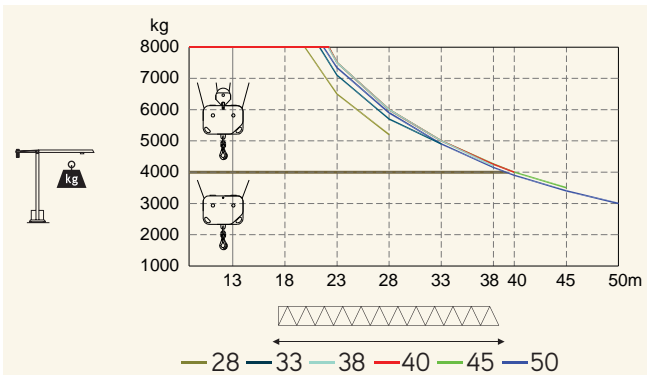
	
	0 a 1 r.p.m. 2x5 daN.m
	0 a 60 m/min 5,5 kW
	0-10 m/min 2x4 kW

			
	0 a 75 m/min 0 a 37,5 m/min	22 kW	
			
			



	48 kVA 400 V +- 5% (50/60 Hz)		58 kVA 400 V +- 5% (50/60 Hz)
---	----------------------------------	---	----------------------------------

Velocidade de elevação . Hoisting speed . Hubgeschwindigkeit . Vitesse d'élevation .
Velocidad de elevación . Velocità di sollevamento . Kaldırma hızı (m/min) .
Скорость подъема (м/мин)



Elementos . Parts . Teile . Éléments . Elementos . Elemento . Parçalar . ЭЛЕМЕНТЫ

		A (mm)	B (mm)	C (mm)	kg	Code
L68		11970	1900	2900	5050	
L69		11960	1160	2260	1650	
L73		5230	1160	2260	750	
L70		6200	1160	1950	680	
L56		5200	1160	1930	590	
L76		5180	1160	1610	370	531 50 30
L65		5110	1160	1610	330	
RS9 RI9		2505	1700	1950	4650	
P8		2230	1300	820	830	
CL15		1850	1300	2280	985	
CL4		11400	1500	500	4000	
CP2		1160	330	3140	8x2000 16000	704 20 00
CP3		1160	165	3140	2x1000 2000	704 10 00
TOTAL					37885	
B1		12000	1620	1620	3450	508 12 00
B1		6130	1620	1620	1800	508 06 00
B1		3195	1620	1620	1070	508 06 01
B1		3195	1830	1830	1100	508 06 03
B1		1775	1600	1600	650	508 06 02
B1		6620	500	1040	1850	608 00 01
B1		3210	340	1040	2x950 1900	
TOTAL					3750	